



International Journal of Engineering, Science and Humanities

An international peer reviewed, refereed, open-access journal
Impact Factor 8.3 www.ijesh.com ISSN: 2250-3552

A Comparative Investigation of Type I and Type II Superconductors with Emphasis on Magnetic Behavior and Critical Parameters

Gajendra Kumar Mahawar

Associate Professor – Physics, Govt. College Rajgarh (Alwar)

ABSTRACT

Superconductivity is a quantum mechanical phenomenon characterized by zero electrical resistance and perfect diamagnetism below a critical temperature. This study presents a comparative investigation of Type I and Type II superconductors, with particular emphasis on their magnetic behavior and critical parameters. Type I superconductors exhibit complete expulsion of magnetic flux through the Meissner effect and are defined by a single critical magnetic field, whereas Type II superconductors display a mixed state characterized by partial flux penetration and the formation of quantized vortices between two critical fields. The analysis focuses on key parameters such as critical temperature, critical magnetic fields, critical current density, and the Ginzburg–Landau parameter, which governs their classification. Differences in magnetic response, flux dynamics, and practical applicability are critically evaluated. The study highlights the superior performance of Type II superconductors in high-field applications and provides insights into their technological significance in modern scientific and engineering domains.

Keywords: Superconductivity, Type I Superconductors, Type II Superconductors, Magnetic Behavior, Critical Parameters

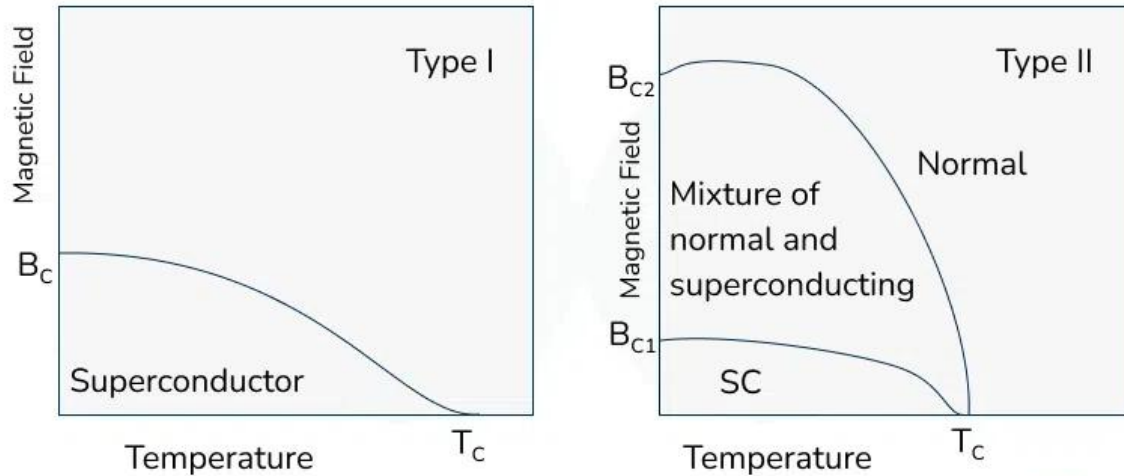
1. INTRODUCTION

Superconductivity is a fundamental quantum mechanical phenomenon in which certain materials exhibit zero electrical resistance and perfect diamagnetism when cooled below a characteristic critical temperature. First discovered in 1911 by Heike Kamerlingh Onnes during experiments on mercury, superconductivity has since evolved into a central area of condensed matter physics with far-reaching technological implications. The defining feature of superconductors is the complete expulsion of magnetic flux, known as the Meissner effect, which distinguishes them from ideal conductors and underscores their unique electromagnetic behavior. Over time, superconducting materials have been broadly classified into Type I and Type II categories based on their magnetic response and critical field characteristics. Type I superconductors, typically pure elemental metals, exhibit a sharp transition from the superconducting to the normal state at a single critical magnetic field, demonstrating complete diamagnetism.



International Journal of Engineering, Science and Humanities

An international peer reviewed, refereed, open-access journal
Impact Factor 8.3 www.ijesh.com ISSN: 2250-3552



Comparison of Type – I and Type – II Superconductors



In contrast, Type II superconductors, generally alloys or complex compounds, display a more intricate magnetic behavior characterized by two critical magnetic fields and an intermediate mixed state where magnetic flux penetrates the material in quantized vortices. This distinction is quantitatively described by the Ginzburg–Landau parameter, which serves as a criterion for classification and reflects the balance between magnetic penetration depth and coherence length. The theoretical understanding of superconductivity was significantly advanced by the Bardeen–Cooper–Schrieffer (BCS) theory, developed by John Bardeen, Leon Cooper, and John Robert Schrieffer, which explains the formation of Cooper pairs and the emergence of an energy gap. This paper aims to conduct a comparative investigation of Type I and Type II superconductors with a specific focus on their magnetic behavior and critical parameters, including critical temperature, magnetic fields, and current density. Understanding these differences is essential for both theoretical insights and practical applications, as Type II superconductors are widely utilized in high-field technologies such as magnetic resonance imaging, particle accelerators, and power transmission systems, while Type I superconductors remain important for foundational research and magnetic shielding applications.

This study focuses on a systematic comparative analysis of Type I and Type II superconductors, emphasizing their magnetic behavior and key critical parameters within the framework of condensed matter physics. It examines fundamental properties such as the Meissner effect, magnetic flux exclusion and penetration, and vortex dynamics, alongside critical parameters including critical temperature (T_c), critical magnetic fields (H_c , H_{c1} , H_{c2}), critical current density (J_c), and the Ginzburg–Landau parameter (κ). The scope is limited to conventional low-temperature superconductors and widely studied high-field Type II materials, excluding highly



International Journal of Engineering, Science and Humanities

An international peer reviewed, refereed, open-access journal
Impact Factor 8.3 www.ijesh.com ISSN: 2250-3552

specialized or emerging unconventional superconductors. Both theoretical foundations, including the BCS theory, and experimental characterization techniques such as magnetization and resistivity measurements are considered. The study also evaluates practical implications in technological applications like MRI systems, particle accelerators, and power devices. By integrating theoretical concepts with applied perspectives, the research aims to provide a clear understanding of the distinctions and performance capabilities of the two superconducting types.

2. BACKGROUND OF THE STUDY

The study of superconductivity has its origins in the pioneering work of Heike Kamerlingh Onnes, who first observed zero electrical resistance in mercury at cryogenic temperatures, marking a major breakthrough in condensed matter physics. Subsequent discoveries, particularly the Meissner effect, revealed that superconductors are not merely perfect conductors but exhibit complete magnetic flux expulsion, establishing their unique electromagnetic identity. The theoretical understanding was further strengthened by the Bardeen–Cooper–Schrieffer (BCS) theory developed by John Bardeen, Leon Cooper, and John Robert Schrieffer, explaining superconductivity through the formation of Cooper pairs. Over time, the classification into Type I and Type II superconductors emerged based on their magnetic responses and critical field behavior. The introduction of the mixed state theory by Alexei Abrikosov further advanced the understanding of Type II superconductors. This background provides the conceptual and scientific foundation for analyzing their magnetic behavior and critical parameters in a comparative context.

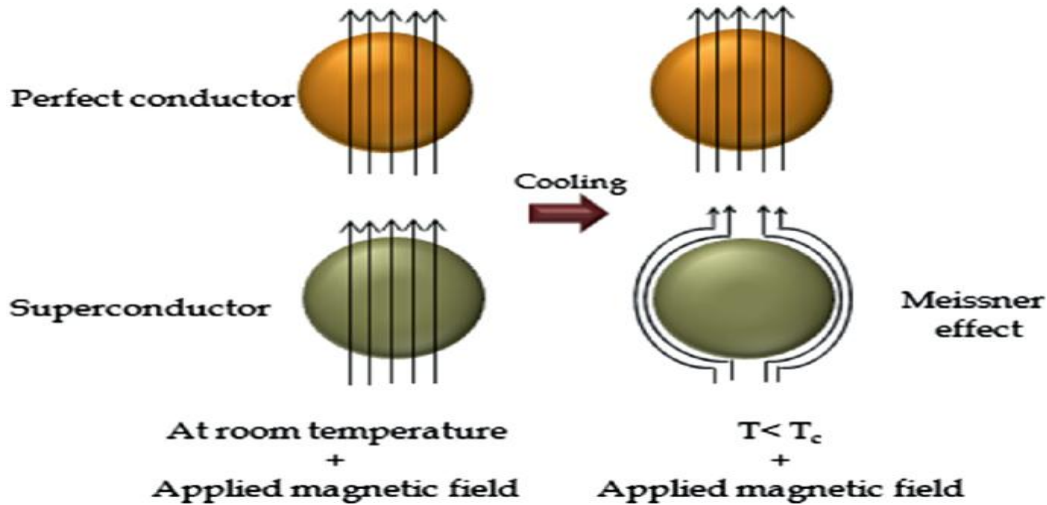
3. DEFINITION AND CONCEPT OF SUPERCONDUCTIVITY

Superconductivity is a quantum mechanical state of matter in which certain materials exhibit exactly zero electrical resistance and perfect diamagnetism when cooled below a characteristic critical temperature (T_c). In this state, electric current can flow indefinitely without energy dissipation, distinguishing superconductors fundamentally from ordinary conductors. The phenomenon was first discovered by Heike Kamerlingh Onnes in 1911 during experiments on mercury at cryogenic temperatures, leading to a paradigm shift in the understanding of electrical conduction.



International Journal of Engineering, Science and Humanities

An international peer reviewed, refereed, open-access journal
Impact Factor 8.3 www.ijesh.com ISSN: 2250-3552



A defining feature of superconductivity is the Meissner effect, wherein magnetic fields are completely expelled from the interior of the material, indicating that superconductivity is not merely a state of perfect conductivity but a distinct thermodynamic phase. The microscopic explanation of this phenomenon was provided by the Bardeen–Cooper–Schrieffer (BCS) theory developed by John Bardeen, Leon Cooper, and John Robert Schrieffer, which describes how electrons form bound pairs, known as Cooper pairs, through lattice interactions. These pairs move coherently without scattering, resulting in zero resistance. Superconductivity is also characterized by critical parameters such as critical temperature, critical magnetic field, and critical current density, beyond which the superconducting state is destroyed. The concept extends to two major classes—Type I and Type II superconductors—each defined by distinct magnetic behaviors and responses to external fields, making superconductivity a cornerstone of modern condensed matter physics and advanced technological applications.

4. HISTORICAL DISCOVERY BY HEIKE KAMERLINGH ONNES (1911)

The discovery of superconductivity in 1911 by Heike Kamerlingh Onnes marked a transformative milestone in low-temperature physics and materials science. While investigating the electrical properties of metals at cryogenic temperatures in Leiden, Onnes utilized liquid helium to cool mercury to approximately 4.2 K. During this experiment, he observed that the electrical resistance of mercury suddenly dropped to zero, rather than decreasing gradually as expected. This abrupt transition indicated the emergence of a new physical state, later termed “superconductivity.” Onnes’s work built upon his earlier success in liquefying helium in 1908, which enabled scientists to explore matter at unprecedentedly low temperatures. The phenomenon challenged classical theories of electrical conduction and prompted extensive theoretical and experimental research. Although the microscopic explanation remained unresolved for decades, the eventual development of quantum theories, particularly the BCS



International Journal of Engineering, Science and Humanities

An international peer reviewed, refereed, open-access journal
Impact Factor 8.3 www.ijesh.com ISSN: 2250-3552

theory, provided a robust framework for understanding this behavior. Onnes was awarded the Nobel Prize in Physics in 1913 for his investigations into the properties of matter at low temperatures, including the discovery of superconductivity. His groundbreaking work laid the foundation for modern superconducting technologies and significantly advanced the field of condensed matter physics.

5. IMPORTANCE IN MODERN PHYSICS AND ENGINEERING

Superconductivity occupies a central position in modern physics and engineering due to its unique quantum mechanical properties and transformative technological applications. From a physics perspective, it provides a macroscopic manifestation of quantum phenomena, enabling the study of electron pairing, phase coherence, and quantum field interactions in condensed matter systems. The theoretical framework established by John Bardeen, Leon Cooper, and John Robert Schrieffer has not only deepened the understanding of superconductivity but also influenced broader domains such as quantum mechanics and materials science. In engineering, superconductors are indispensable for high-performance applications requiring minimal energy loss and strong magnetic fields. Type II superconductors, in particular, are widely used in magnetic resonance imaging (MRI), particle accelerators, and fusion reactors due to their ability to operate under high magnetic fields and current densities. Superconducting magnets enable precise medical imaging and advanced experimental research in high-energy physics. Additionally, superconductors play a crucial role in emerging technologies such as quantum computing, where they are used in qubits and ultra-sensitive measurement devices like SQUIDs (Superconducting Quantum Interference Devices). Their application in power transmission systems also offers the potential for highly efficient, low-loss energy distribution. Thus, superconductivity bridges fundamental science and applied engineering, driving innovation across multiple high-impact technological sectors.

6. THEORETICAL BACKGROUND OF SUPERCONDUCTIVITY

1. Fundamental Properties

Superconductivity is fundamentally characterized by two defining properties: zero electrical resistance and perfect diamagnetism. When a material transitions below its critical temperature (T_c), its electrical resistivity abruptly drops to zero, allowing electric current to persist indefinitely without energy loss, which is a direct consequence of coherent quantum transport. Equally significant is perfect diamagnetism, observed as the complete expulsion of magnetic fields from the interior of the material, a phenomenon known as the Meissner effect. This distinguishes superconductors from ideal conductors, as the superconducting state represents a distinct thermodynamic phase rather than merely a state of zero resistance. These properties are governed by macroscopic quantum coherence, where electrons behave collectively rather than as independent particles, forming the basis for advanced theoretical models.



International Journal of Engineering, Science and Humanities

An international peer reviewed, refereed, open-access journal
Impact Factor 8.3 www.ijesh.com ISSN: 2250-3552

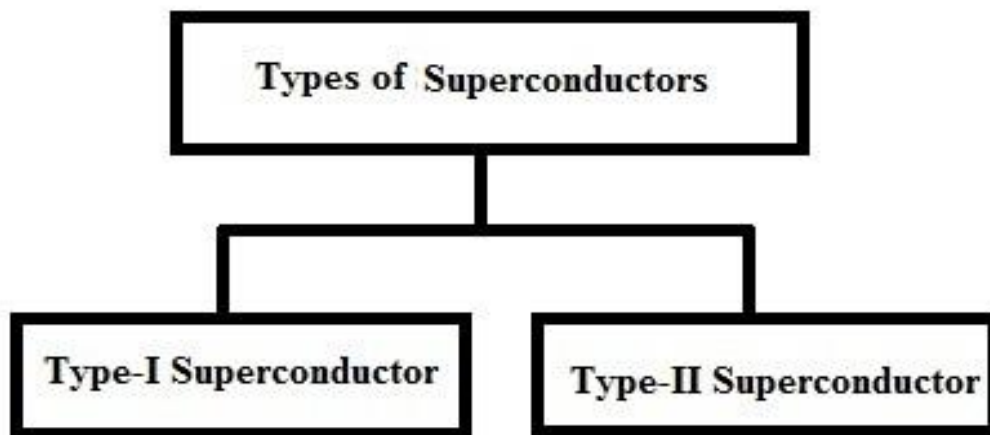
2. Meissner Effect

The Meissner effect is a hallmark of superconductivity, demonstrating the complete exclusion of magnetic flux from a superconductor when it is cooled below its critical temperature in the presence of an external magnetic field. This phenomenon indicates that superconductivity is not just perfect conductivity but a unique electromagnetic state with intrinsic field-repelling behavior. Physically, it arises due to the generation of surface screening currents that produce magnetic fields opposing the applied field, thereby canceling it within the bulk of the material. The depth to which magnetic fields can penetrate is described by the London penetration depth, which is typically very small. This flux exclusion behavior plays a crucial role in defining the magnetic response of superconductors and is central to distinguishing between Type I and Type II materials.

3. BCS Theory

The microscopic explanation of superconductivity is provided by the Bardeen–Cooper–Schrieffer (BCS) theory, developed by John Bardeen, Leon Cooper, and John Robert Schrieffer in 1957. According to this theory, electrons in a superconductor form bound pairs known as Cooper pairs through an attractive interaction mediated by lattice vibrations (phonons). These pairs condense into a single quantum state, enabling resistance-free current flow. A key feature of BCS theory is the presence of an energy gap between the ground state and excited states, which prevents scattering by impurities or lattice defects at low temperatures. This energy gap is temperature-dependent and vanishes at the critical temperature, marking the transition back to the normal conducting state.

Classification of Superconductors





International Journal of Engineering, Science and Humanities

An international peer reviewed, refereed, open-access journal
Impact Factor 8.3 www.ijesh.com ISSN: 2250-3552

1. Type I Superconductors

Type I superconductors are primarily composed of pure elemental metals such as mercury (Hg), lead (Pb), and aluminum (Al), and they exhibit relatively simple and well-defined superconducting behavior. These materials are characterized by a complete Meissner effect, meaning they entirely expel magnetic flux from their interior when cooled below the critical temperature in the presence of an external magnetic field. This perfect diamagnetic response persists until a single critical magnetic field (H_c) is reached, beyond which superconductivity is abruptly destroyed and the material transitions to the normal conducting state. The transition is sharp and does not involve intermediate states under ideal conditions, although in practice, slight inhomogeneities may produce limited mixed regions. Type I superconductors generally have low critical temperatures and low critical magnetic fields, which restrict their practical applications in high-field environments. Their behavior can be effectively described using classical thermodynamic models and the Ginzburg–Landau theory for low κ values ($\kappa < 1/\sqrt{2}$). Due to their limited tolerance to magnetic fields, Type I superconductors are mainly used in fundamental research and specialized applications such as magnetic shielding.

2. Type II Superconductors

Type II superconductors consist of alloys and complex compounds such as niobium-titanium (NbTi) and yttrium barium copper oxide (YBCO), and they exhibit more complex and technologically significant behavior compared to Type I materials. Unlike Type I superconductors, they do not show complete flux exclusion at higher magnetic fields. Instead, they enter a mixed or vortex state between two critical magnetic fields: the lower critical field (H_{c1}), where magnetic flux begins to penetrate, and the upper critical field (H_{c2}), beyond which superconductivity is entirely lost. In this intermediate region, magnetic flux penetrates the material in quantized units, forming an ordered lattice of vortices, a phenomenon theoretically explained by Alexei Abrikosov. This vortex behavior allows Type II superconductors to sustain superconductivity under much higher magnetic fields and current densities than Type I materials. They typically have higher critical temperatures and enhanced mechanical and electromagnetic stability, making them highly suitable for practical applications such as MRI systems, superconducting magnets, particle accelerators, and power transmission technologies.

7. LITERATURE REVIEW

The modern understanding of superconductivity, particularly the distinction between Type I and Type II materials, is deeply rooted in both theoretical and experimental advancements documented in foundational and contemporary literature. The seminal contribution of Alexei Abrikosov (2004) provides a rigorous explanation of Type II superconductors through the concept of the vortex lattice, establishing the framework for understanding mixed-state behavior under magnetic fields. Abrikosov's work demonstrated that magnetic flux penetrates Type II



International Journal of Engineering, Science and Humanities

An international peer reviewed, refereed, open-access journal
Impact Factor 8.3 www.ijesh.com ISSN: 2250-3552

superconductors in quantized units, forming an ordered lattice structure, which fundamentally differentiates them from Type I superconductors that exhibit complete flux expulsion. Complementing this, Blatter et al. (2004) provided an extensive review of vortex physics in high-temperature superconductors, emphasizing flux pinning, vortex dynamics, and thermal fluctuations. Their work is particularly significant in explaining how defects and material inhomogeneities enhance critical current density by immobilizing vortices, a key property for practical applications. Together, these studies highlight the centrality of magnetic behavior in distinguishing superconducting types and underline the importance of vortex physics in determining performance under applied magnetic fields. Furthermore, the literature consistently demonstrates that Type II superconductors exhibit superior magnetic stability compared to Type I materials, particularly in high-field environments, reinforcing their dominance in technological applications.

The applied and materials-oriented perspective of superconductivity is further elaborated in studies focusing on critical parameters and engineering applications. Gurevich (2011) critically examines the practical limitations and opportunities associated with superconductors, particularly emphasizing the role of critical temperature, magnetic field tolerance, and material anisotropy in determining usability. His work raises important considerations regarding whether high-temperature superconductors can fully replace conventional low-temperature materials, suggesting that despite their higher T_c values, challenges such as flux creep and material brittleness remain significant. Similarly, Larbalestier et al. (2001) provide a comprehensive analysis of high-temperature superconducting materials for electric power applications, highlighting the importance of critical current density (J_c) and flux pinning in ensuring efficient performance. Their study underscores that improvements in microstructural engineering, such as introducing artificial pinning centers, can significantly enhance the performance of Type II superconductors. These findings align with the broader consensus that critical parameters—including T_c , H_c , H_{c1} , H_{c2} , and J_c —are not only theoretical constructs but also practical determinants of superconducting efficiency. Moreover, these studies collectively emphasize that while Type I superconductors are valuable for understanding fundamental principles, their low critical fields and temperatures limit their practical application, whereas Type II superconductors, with their higher tolerance to magnetic fields, are indispensable in modern engineering systems.

In addition to research articles, standard textbooks provide a comprehensive theoretical foundation that integrates microscopic theory with macroscopic observations. Works such as those by Poole et al. (2014), Michael Tinkham (2004), Orlando and Delin (2001), and Ketterson and Song (2002) offer detailed discussions on the fundamental principles governing superconductivity, including the Meissner effect, London equations, and Ginzburg–Landau



International Journal of Engineering, Science and Humanities

An international peer reviewed, refereed, open-access journal
Impact Factor 8.3 www.ijesh.com ISSN: 2250-3552

theory. These texts elaborate on how the Ginzburg–Landau parameter (κ) serves as a critical criterion for classifying superconductors into Type I and Type II, based on the ratio of penetration depth to coherence length. Tinkham (2004), in particular, provides a clear exposition of the thermodynamic and electromagnetic properties of superconductors, linking theoretical constructs with experimental observations. Orlando and Delin (2001) further extend this understanding to applied superconductivity, discussing practical considerations such as material fabrication, stability, and device integration. Meanwhile, Ketterson and Song (2002) bridge the gap between theory and experiment by offering insights into superconducting phenomena across different material systems. Collectively, these sources form a cohesive body of knowledge that supports the comparative analysis of Type I and Type II superconductors, emphasizing that their differences in magnetic behavior and critical parameters are rooted in both microscopic interactions and macroscopic electromagnetic properties. This integrated perspective is essential for advancing both the scientific understanding and technological application of superconducting materials.

8. MAGNETIC BEHAVIOR ANALYSIS

1. Magnetic Response in Type I

Type I superconductors exhibit a simple and sharply defined magnetic response characterized by complete flux expulsion and an abrupt phase transition. When subjected to an external magnetic field below the critical magnetic field (H_c), these materials remain in a superconducting state and display perfect diamagnetism due to the complete exclusion of magnetic flux, as described by the Meissner effect. However, once the applied field reaches H_c , superconductivity is suddenly destroyed, and the material transitions directly to the normal conducting state. This transition is first-order in nature and does not involve intermediate magnetic states under ideal homogeneous conditions. The magnetization curve for Type I superconductors shows a sharp discontinuity at the critical field, reflecting the loss of superconducting properties.

2. Magnetic Response in Type II

In contrast, Type II superconductors demonstrate a far more complex magnetic response due to their ability to sustain superconductivity over a wider range of magnetic fields. When the applied magnetic field exceeds the lower critical field (H_{c1}), magnetic flux begins to penetrate the material in discrete, quantized units known as flux lines or vortices, while superconductivity is still maintained in the surrounding regions. This results in a mixed or vortex state, where both superconducting and normal regions coexist. As the field increases further toward the upper critical field (H_{c2}), the density of vortices increases until superconductivity is completely suppressed. The arrangement of these vortices forms a highly ordered structure called the Abrikosov lattice, theoretically explained by Alexei Abrikosov.



International Journal of Engineering, Science and Humanities

An international peer reviewed, refereed, open-access journal
Impact Factor 8.3 www.ijesh.com ISSN: 2250-3552

3. Comparative Magnetic Properties

A comparative evaluation of magnetic properties reveals significant differences between the two types. Type I superconductors exhibit stronger and complete diamagnetism but lack stability under moderate magnetic fields due to their single critical threshold. In contrast, Type II superconductors display weaker overall diamagnetism in the mixed state but possess enhanced stability across a wide magnetic field range. Additionally, flux pinning mechanisms in Type II materials—arising from defects and impurities—play a crucial role in immobilizing vortices, thereby preventing energy dissipation and enabling high critical current densities. This makes Type II superconductors more suitable for practical and industrial applications requiring robust magnetic performance.

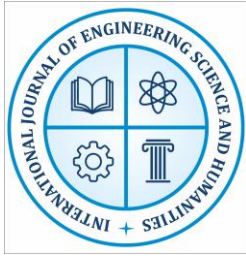
9. CRITICAL PARAMETERS

1. Critical Temperature (T_c)

The critical temperature (T_c) is the threshold below which a material enters the superconducting phase, exhibiting zero electrical resistance and perfect diamagnetism. It is a fundamental parameter that determines the operational feasibility of superconductors in practical systems, as maintaining temperatures below T_c requires cryogenic infrastructure. Type I superconductors typically possess very low T_c values, often below 10 K, limiting their application scope. In contrast, Type II superconductors, particularly high-temperature ceramic compounds, exhibit significantly higher T_c values, sometimes exceeding 90 K, enabling cooling with liquid nitrogen rather than more expensive liquid helium. The magnitude of T_c is intrinsically linked to the strength of electron pairing interactions and lattice properties, making it a key factor in material design and superconducting performance optimization.

2. Critical Magnetic Field

The critical magnetic field defines the maximum external magnetic field a superconductor can withstand before losing its superconducting state. In Type I superconductors, this is represented by a single critical field (H_c), beyond which superconductivity is abruptly destroyed. This simple behavior reflects their inability to sustain partial magnetic flux penetration. In contrast, Type II superconductors are characterized by two critical magnetic fields: the lower critical field (H_{c1}), at which magnetic flux begins to enter the material, and the upper critical field (H_{c2}), where superconductivity is completely suppressed. Between these limits, the material exists in a mixed state with quantized vortices. This dual-field behavior allows Type II superconductors to operate under significantly stronger magnetic environments, making them suitable for high-field applications.



International Journal of Engineering, Science and Humanities

An international peer reviewed, refereed, open-access journal
Impact Factor 8.3 www.ijesh.com ISSN: 2250-3552

3. Critical Current Density (J_c)

Critical current density (J_c) refers to the maximum current per unit area that a superconductor can carry without losing its superconducting properties. When the applied current exceeds J_c , the superconducting state breaks down due to the motion of magnetic vortices or pair-breaking mechanisms, leading to energy dissipation. In Type II superconductors, J_c is strongly influenced by flux pinning, where defects or impurities in the material immobilize vortices and enhance current-carrying capacity. This parameter is of immense engineering significance, as it determines the efficiency and stability of superconducting wires and devices used in applications such as MRI systems, power cables, and high-field magnets.

4. Ginzburg–Landau Parameter (κ)

The Ginzburg–Landau parameter (κ) is a dimensionless quantity that plays a decisive role in distinguishing between Type I and Type II superconductors within the Ginzburg–Landau theoretical framework. It is defined as the ratio of the magnetic penetration depth (λ), which characterizes how far an external magnetic field can penetrate into a superconductor, to the coherence length (ξ), which represents the size of the region over which the superconducting order parameter (or Cooper pair density) varies significantly. Mathematically, this relationship is expressed as:

$$\kappa = \frac{\lambda}{\xi}$$

The value of κ determines the energetic balance between the superconducting and normal regions at the boundary of a material in a magnetic field. Specifically, κ acts as a critical classification parameter: when $\kappa < 1/\sqrt{2}$, the material is classified as a Type I superconductor, indicating that it favors complete magnetic flux exclusion and exhibits a single critical magnetic field. Conversely, when $\kappa > 1/\sqrt{2}$, the material is classified as a Type II superconductor, where partial magnetic flux penetration occurs through the formation of vortices, leading to the mixed state.

10. RESEARCH METHODOLOGY

This study adopts a comparative analytical methodology integrating both theoretical evaluation and secondary data analysis to examine the magnetic behavior and critical parameters of Type I and Type II superconductors. Initially, an extensive literature review was conducted using peer-reviewed journals, standard textbooks, and authoritative databases to establish the conceptual and theoretical framework of superconductivity, including the Meissner effect, BCS theory, and Ginzburg–Landau theory. Data related to critical temperature (T_c), critical magnetic fields (H_c , H_{c1} , H_{c2}), and critical current density (J_c) were systematically collected from experimental studies and existing research findings. The methodology further involves a comparative approach, where key parameters and magnetic responses of both types are analyzed using tabular



International Journal of Engineering, Science and Humanities

An international peer reviewed, refereed, open-access journal
Impact Factor 8.3 www.ijesh.com **ISSN: 2250-3552**

and descriptive techniques to identify similarities and differences. Emphasis is placed on magnetic field behavior, vortex dynamics, and flux pinning mechanisms. Additionally, graphical interpretations and standard models are considered to support analytical observations. This approach ensures a comprehensive understanding by combining theoretical principles with empirical evidence, enabling a clear evaluation of performance characteristics and practical applicability of superconducting materials.

11. RESULTS AND DISCUSSION

Table 1: Comparison of Fundamental Properties

Parameter	Type I Superconductors	Type II Superconductors
Material Type	Pure elemental metals (Hg, Pb, Al)	Alloys and compounds (NbTi, YBCO)
Critical Temperature (T _c)	Low (typically < 10 K)	Higher (up to > 90 K in some cases)
Electrical Resistance	Zero below T _c	Zero below T _c
Meissner Effect	Complete	Partial (in mixed state)
Magnetic Behavior	Abrupt transition	Gradual transition with vortex state

This table outlines the basic physical and material characteristics distinguishing Type I and Type II superconductors. Type I superconductors, typically pure elemental metals, exhibit low critical temperatures and a complete Meissner effect, meaning total expulsion of magnetic flux below the critical field. In contrast, Type II superconductors, composed of alloys or complex compounds, show higher critical temperatures and a partial Meissner effect due to the presence of a mixed state. Both types exhibit zero electrical resistance below T_c, but their magnetic responses differ significantly. This table establishes the foundational differences that influence their theoretical understanding and practical applicability in superconducting technologies.

Table 2: Magnetic Behavior Comparison

Property	Type I Superconductors	Type II Superconductors
Flux Penetration	No penetration (complete expulsion)	Partial penetration
Magnetic State	Fully superconducting or normal	Mixed (vortex) state exists
Critical Magnetic Field	Single (H _c)	Two (H _{c1} and H _{c2})
Vortex Formation	Absent	Present (Abrikosov lattice)
Stability in Magnetic Field	Low	High

This table compares how Type I and Type II superconductors respond to external magnetic fields. Type I superconductors demonstrate complete flux expulsion and remain entirely superconducting until the critical field is reached, at which point they abruptly transition to the normal state. In contrast, Type II superconductors allow partial magnetic flux penetration



International Journal of Engineering, Science and Humanities

An international peer reviewed, refereed, open-access journal
Impact Factor 8.3 www.ijesh.com **ISSN: 2250-3552**

through quantized vortices, forming a mixed state between H_{c1} and H_{c2} . The presence of the vortex lattice enhances their ability to maintain superconductivity under stronger magnetic fields. Consequently, Type II materials exhibit greater magnetic stability, making them more suitable for high-field applications compared to the relatively fragile magnetic response of Type I superconductors.

Table 3: Critical Parameters Comparison

Parameter	Type I Superconductors	Type II Superconductors
Critical Temperature (T_c)	Low	Moderate to high
Critical Magnetic Field	Low (single H_c)	High (H_{c1} and H_{c2})
Critical Current Density (J_c)	Low	High
Ginzburg–Landau Parameter (κ)	$\kappa < 1/\sqrt{2}$	$\kappa > 1/\sqrt{2}$
Flux Pinning	Not significant	Strong (important for applications)

This table highlights key critical parameters governing superconducting behavior. Type I superconductors possess low critical temperature, magnetic field, and current density, limiting their functional range. They are characterized by a Ginzburg–Landau parameter (κ) less than $1/\sqrt{2}$, indicating complete flux exclusion. Conversely, Type II superconductors exhibit higher critical temperature, magnetic fields, and current density, along with κ greater than $1/\sqrt{2}$, allowing for vortex formation and mixed-state behavior. Flux pinning, which is absent or negligible in Type I materials, significantly enhances the performance of Type II superconductors by stabilizing vortices and preventing energy dissipation, thereby improving their efficiency in practical applications.

Table 4: Application-Oriented Comparison

Aspect	Type I Superconductors	Type II Superconductors
Practical Applications	Limited	Extensive
High Magnetic Field Use	Not suitable	Highly suitable
Engineering Use	Minimal	Widely used
Examples	Mercury, Lead	NbTi, YBCO
Technological Importance	Low	Very high



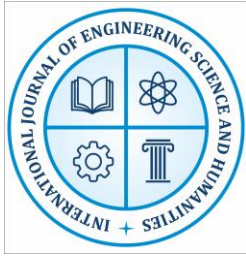
International Journal of Engineering, Science and Humanities

An international peer reviewed, refereed, open-access journal
Impact Factor 8.3 www.ijesh.com ISSN: 2250-3552

This table focuses on the practical and technological relevance of both superconducting types. Type I superconductors have limited applications due to their low critical parameters and inability to function in strong magnetic fields, restricting them mainly to laboratory studies and magnetic shielding. In contrast, Type II superconductors are widely used in advanced technologies such as MRI machines, superconducting magnets, particle accelerators, and power transmission systems. Their ability to sustain high magnetic fields and current densities makes them indispensable in engineering applications. This table emphasizes the dominant role of Type II superconductors in modern technological advancements.

12. CONCLUSION

This study has provided a comprehensive comparative investigation of Type I and Type II superconductors with a focused analysis on their magnetic behavior and critical parameters. The findings clearly demonstrate that while both classes exhibit the defining characteristics of superconductivity—zero electrical resistance and the Meissner effect—their responses to external magnetic fields and operational capabilities differ significantly. Type I superconductors, typically pure elemental metals, display complete magnetic flux expulsion and a sharp transition to the normal state at a single critical magnetic field, making their behavior relatively simple but limiting their application in high-field environments. In contrast, Type II superconductors exhibit a more complex magnetic response characterized by two critical fields and the presence of a mixed state where magnetic flux penetrates in the form of vortices, a phenomenon explained by Alexei Abrikosov. This unique vortex structure, combined with flux pinning mechanisms, allows Type II materials to sustain superconductivity under much higher magnetic fields and current densities. Furthermore, critical parameters such as higher critical temperatures, enhanced current-carrying capacity, and improved magnetic stability make Type II superconductors far more suitable for practical and industrial applications. Consequently, they are extensively utilized in technologies such as MRI systems, particle accelerators, and power transmission networks. Overall, the comparative analysis underscores that while Type I superconductors remain important for fundamental understanding and specialized uses, Type II superconductors dominate in technological relevance due to their superior performance under demanding conditions. This distinction highlights the importance of magnetic behavior and critical parameters in determining the applicability and advancement of superconducting materials in modern science and engineering.



International Journal of Engineering, Science and Humanities

An international peer reviewed, refereed, open-access journal
Impact Factor 8.3 www.ijesh.com ISSN: 2250-3552

REFERENCES

1. Abrikosov, A. A. (2004). Nobel lecture: Type-II superconductors and the vortex lattice. *Reviews of Modern Physics*, 76(3), 975–979.
2. Blatter, G., Feigel'man, M. V., Geshkenbein, V. B., Larkin, A. I., & Vinokur, V. M. (2004). Vortices in high-temperature superconductors. *Reviews of Modern Physics*, 66(4), 1125–1388.
3. Gurevich, A. (2011). To use or not to use cool superconductors? *Nature Materials*, 10(4), 255–259.
4. Larbalestier, D., Gurevich, A., Feldmann, D. M., & Polyanskii, A. (2001). High-Tc superconducting materials for electric power applications. *Nature*, 414(6861), 368–377.
5. Poole, C. P., Farach, H. A., Creswick, R. J., & Prozorov, R. (2014). *Superconductivity* (3rd ed.). Academic Press.
6. Tinkham, M. (2004). *Introduction to superconductivity* (2nd ed.). Dover Publications.
7. Orlando, T. P., & Delin, K. A. (2001). *Foundations of applied superconductivity*. Addison-Wesley.
8. Ketterson, J. B., & Song, S. N. (2002). *Superconductivity*. Cambridge University Press.
9. Deutscher, G. (2005). Andreev–Saint-James reflections: A probe of cuprate superconductors. *Reviews of Modern Physics*, 77(1), 109–135.
10. Xi, X. X. (2008). Two-band superconductor magnesium diboride. *Reports on Progress in Physics*, 71(11), 116501.
11. Canfield, P. C., & Bud'ko, S. L. (2010). FeAs-based superconductivity: A case study of the effects of transition metal doping. *Annual Review of Condensed Matter Physics*, 1, 27–50.
12. Hosono, H., Yamamoto, A., Hiramatsu, H., & Ma, Y. (2018). Recent advances in iron-based superconductors toward applications. *Materials Today*, 21(3), 278–302.
13. Ginzburg, V. L. (2004). Nobel lecture: On superconductivity and superfluidity. *Reviews of Modern Physics*, 76(3), 981–998.
14. Hirsch, J. E. (2019). Conventional superconductivity. *Physics Today*, 72(6), 42–47.
15. Linder, J., & Robinson, J. W. A. (2015). Superconducting spintronics. *Nature Physics*, 11(4), 307–315.